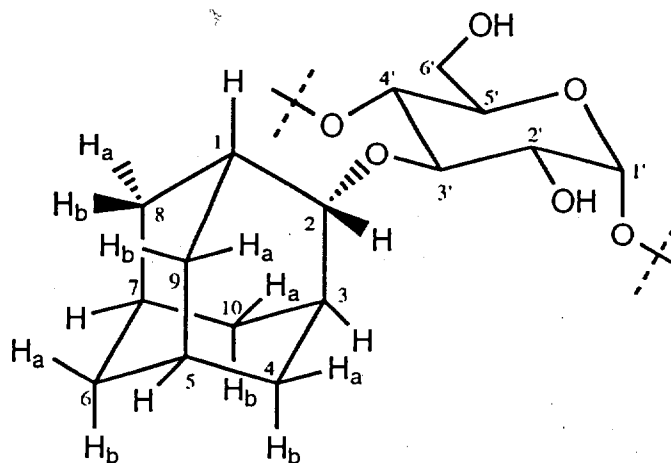
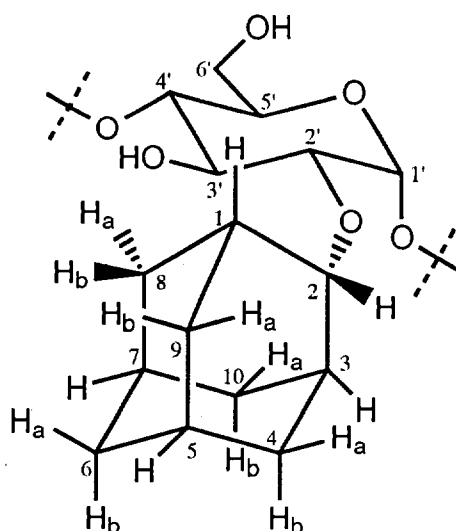


Compound 2



	δ ¹ H (ppm), J (Hz)	δ ¹³ C (ppm)
α-cyclodextrin moiety		
1'	5.014 (3.7)	104.83
1	5.066 (3.2) 5.039 (3.4) 5.002 (3.8)	104.83 / 104.19 104.19 / 103.81 103.72
2'	3.659	74.36
2	3.675 - 3.560	74.25 / 74.12 (3x) / 73.94
3'	3.958	81.58
3	4.015 - 3.875	76.15 / 76.03 / 75.97 / 75.87 / 75.44
4'	3.708	84.48
4	3.625 - 3.545	84.23 / 84.11 (2x) / 83.99 / 83.88
5'	3.762	75.60
5	3.845 - 3.730	74.75 (2x) / 74.62 / 74.56 / 74.48
6'	4.055	64.07
6	3.950 - 3.795	63.05 / 63.94 / 62.91 / 62.86 / 62.68
adamantane moiety		
1	2.160	35.37
2	4.249	86.00
3	2.249	34.27
4a	1.820	39.36
4b	1.995	
5	1.983	29.66
6a	1.785	39.51
6b	1.849	
7	1.969	29.16
8a	2.078	33.60
8b	1.648	
9a	1.957	40.32
9b	1.820	
10a	2.218	33.70
10b	1.602	

Compound 3



	δ ^1H (ppm), J (Hz)	δ ^{13}C (ppm)
α-cyclodextrin moiety		
1'	5.131 (3.3)	103.24
1	5.065 - 5.030	104.43 / 104.28 / 104.03 / 103.95 (2x)
2'	3.622	79.60
2	3.695 - 3.615	74.32 / 74.25 / 74.21 / 74.16 / 73.91
3'	4.075 (9.0 / 9.3)	75.70
3	4.030 - 3.915	76.14 (3x) / 75.94 / 75.54
4'	3.579	
4	3.605 - 3.550	84.59 / 84.26 / 84.05 / 83.89 / 83.86 / 83.83
5'	3.762	
5	3.830 - 3.740	74.73 / 74.66 / 74.60 (2x) / 74.55 / 74.54
6'	3.943 / 3.867	63.16
6	3.940 - 3.820	62.89
adamantane moiety		
1	2.138	34.40
2	3.949	86.05
3	2.227	33.90
4a	1.805	38.95
4b	1.914	
5	1.927	29.60 a
6a	1.748	40.29
6b	1.840	
7	1.927	29.52 a
8a	2.046	33.70
8b	1.624	
9a	1.767	38.85
9b	1.943	
10a	2.143	34.01
10b	1.630	

aassignments can be interchanged

